

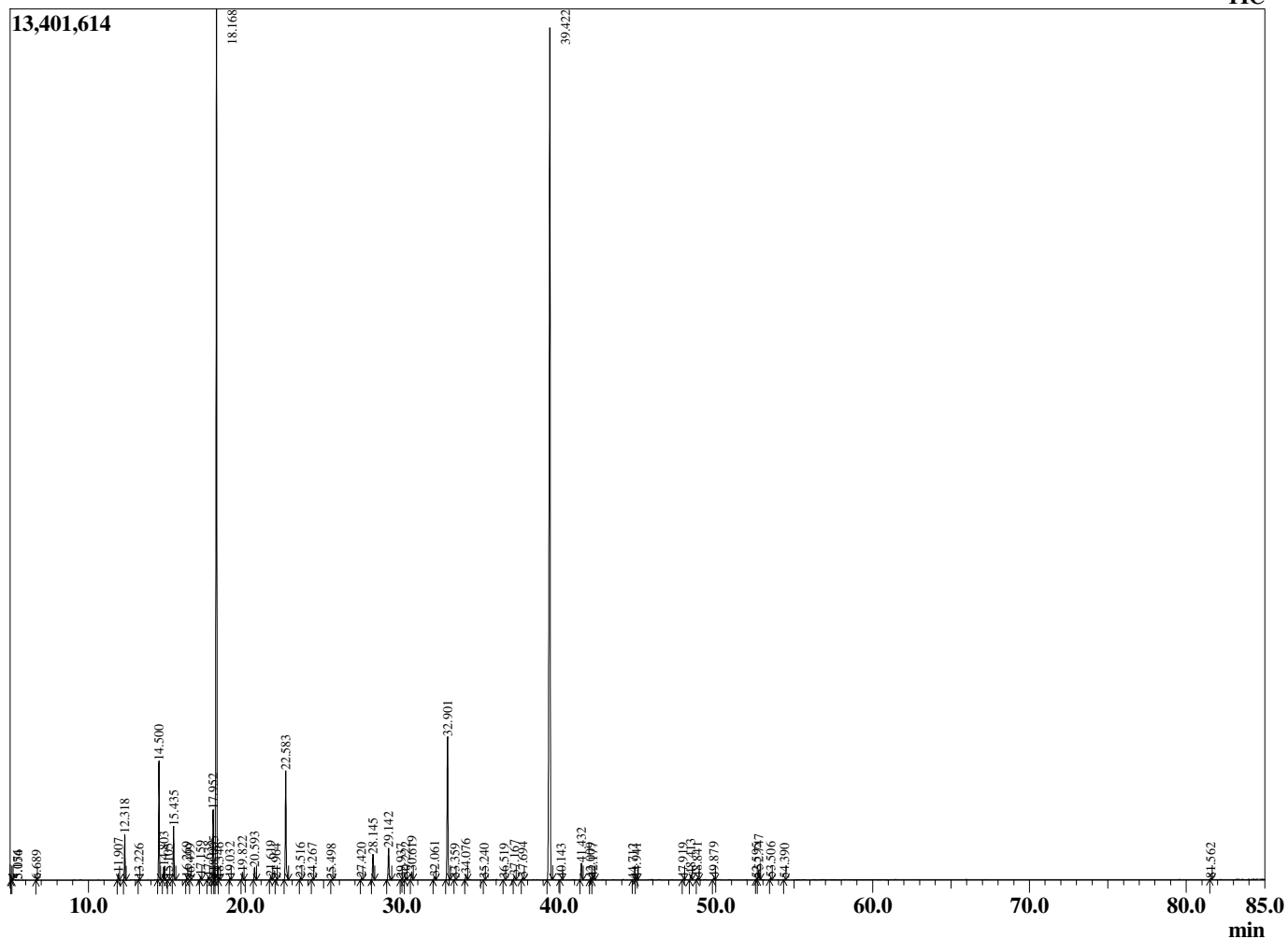
Sample Information

Type Sample : Essential Oil
 Name : Elettaria cardamomum
 Injection Volume : 0.10

Cardamom
 Lot# IDK11-KW
 Country: India



Chromatogram Elettaria cardamomum



R.Time	Name	Peak Report TIC	Area%
5.074	1-Pentanol		0.01
5.156	2-Methyl butanol		0.01
6.689	Hexanal		0.01
11.907	alpha-Thujene		0.19
12.318	alpha-Pinene		1.34
13.226	Camphene		0.02
14.500	Sabinene		3.76
14.803	beta-Pinene		0.41
15.105	6-Methyl hept-5-en-2-one		0.03
15.435	Myrcene		1.71
16.269	Octanal		0.08
16.499	alpha-Phellandrene		0.01
17.159	alpha-Terpinene		0.13
17.638	para-Cymene		0.11
17.952	Limonene		2.48
18.005	beta-Phellandrene		0.13
18.168	1,8-Cineole		31.70
18.346	cis-beta-Ocimene		0.04
19.032	trans-beta-Ocimene		0.06
19.822	gamma-Terpinene		0.27
20.593	trans-Sabinene hydrate		0.46
21.619	Terpinolene		0.12
21.964	6,7-Epoxyterpinene		0.02
22.583	Linalool		4.22
23.516	Unidentified		0.05
24.267	cis-para-Menth-2-en-1-ol		0.03
25.498	trans-para-Menth-2-en-1-ol		0.01
27.420	delta-Terpineol		0.06
28.145	Terpinen-4-ol		1.01
29.142	alpha-Terpineol		1.33
29.937	Decanal		0.02
30.222	Octyl acetate		0.09
30.619	Unidentified		0.33
32.061	Neral		0.13
32.901	Linalyl acetate		5.79
33.359	Unidentified		0.02
34.076	Geranial		0.21
35.240	Bornyl acetate		0.03
36.519	alpha-Terpinyl formate		0.03
37.167	delta-Terpinyl acetate		0.16
37.694	Methyl geranate		0.10
39.422	alpha-Terpinyl acetate		41.45
40.143	Neryl acetate		0.02
41.432	Geranyl acetate		0.66
42.009	Unidentified		0.05
42.177	beta-Elementene		0.07
44.712	Unidentified		0.02
44.941	alpha-Terpinyl propionate		0.05
47.919	Germacrene D		0.03
48.413	beta-Selinene		0.22
48.841	alpha-Selinene		0.09
49.879	gamma-Cadinene		0.07
52.595	Germacrene B		0.03
52.747	trans-Nerolidol		0.43
53.506	Dendralasin		0.07
54.390	Viridiflorol		0.02
81.562	Unidentified		0.02
			100.00